

Name: _____

SMARTnotebook Reference

What's inside:

- Pg 1:

- How to open Notebook (only in classrooms, not computer lab)
- How to add a collection to the gallery

- Pg 2:

- The gallery explained

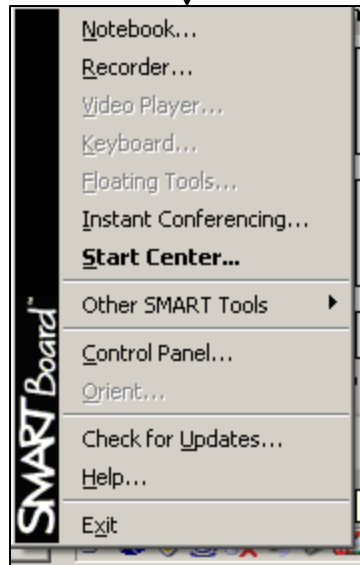
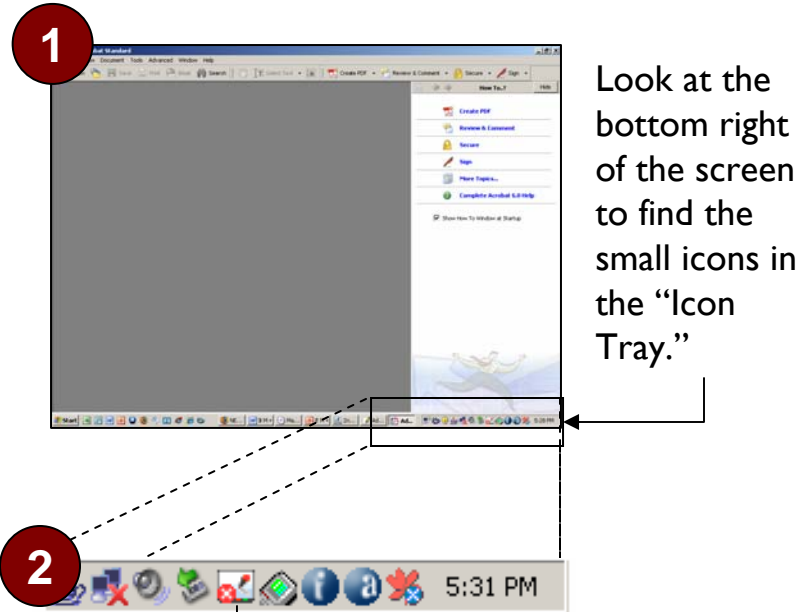
- Pgs 3, 4, & 5

- SMARTnotebook toolbars

- Pg 6

- The Shape Pen and Magic Pen

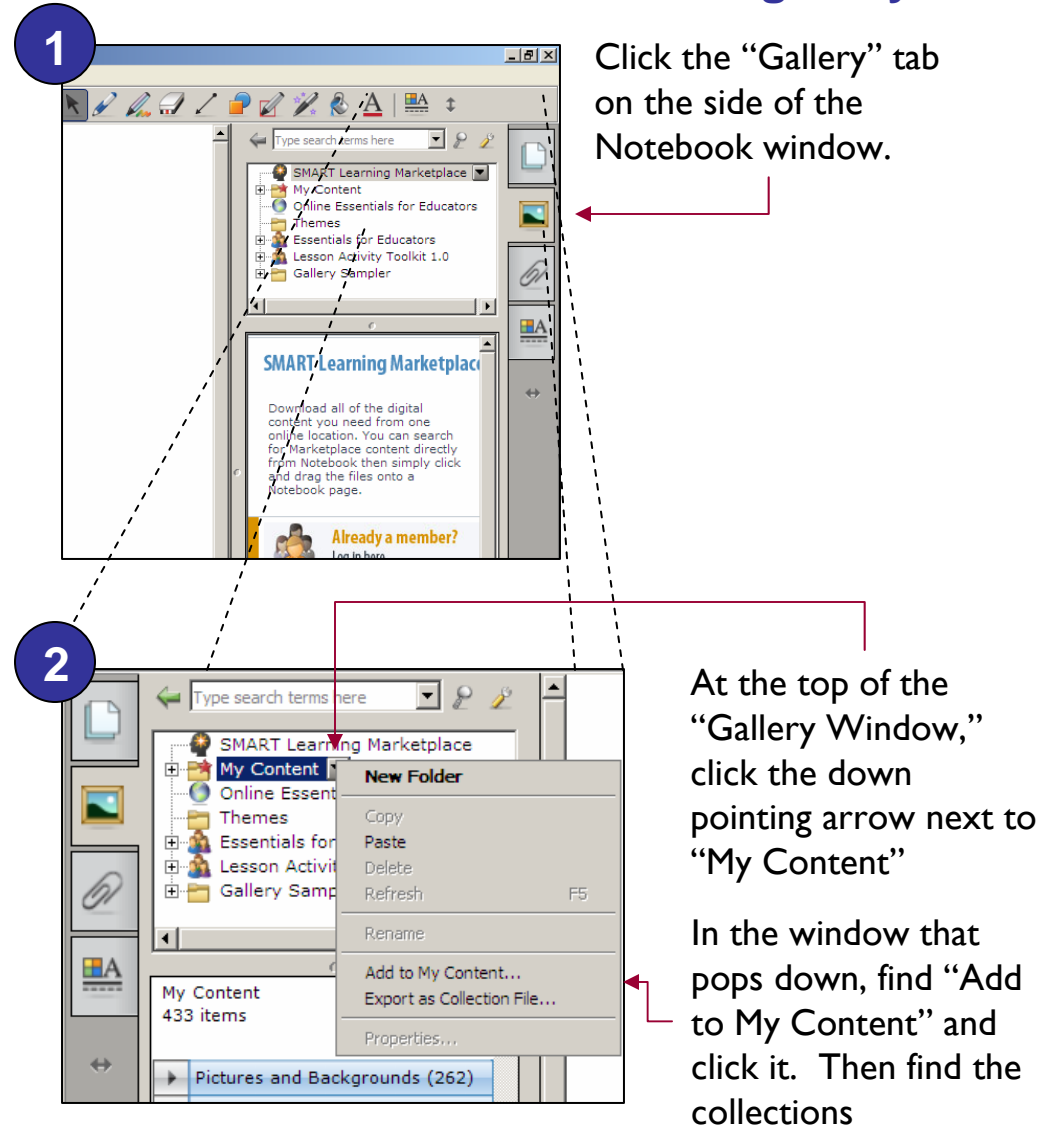
How to open SMARTnotebook



Click the icon that looks like a white SMARTboard

In the menu that pops up, click "Notebook." It will be the top item.

How to add a collection to the gallery



These collection files are on your CD. You can point the computer to the CD drive when you add the gallery to your content. They will also be on the H:\\ drive for the 2008-09 year. I'm not sure exactly where yet.

SMARTnotebook 10 Gallery



Once the “Gallery Tab” is clicked the gallery sidebar will open.

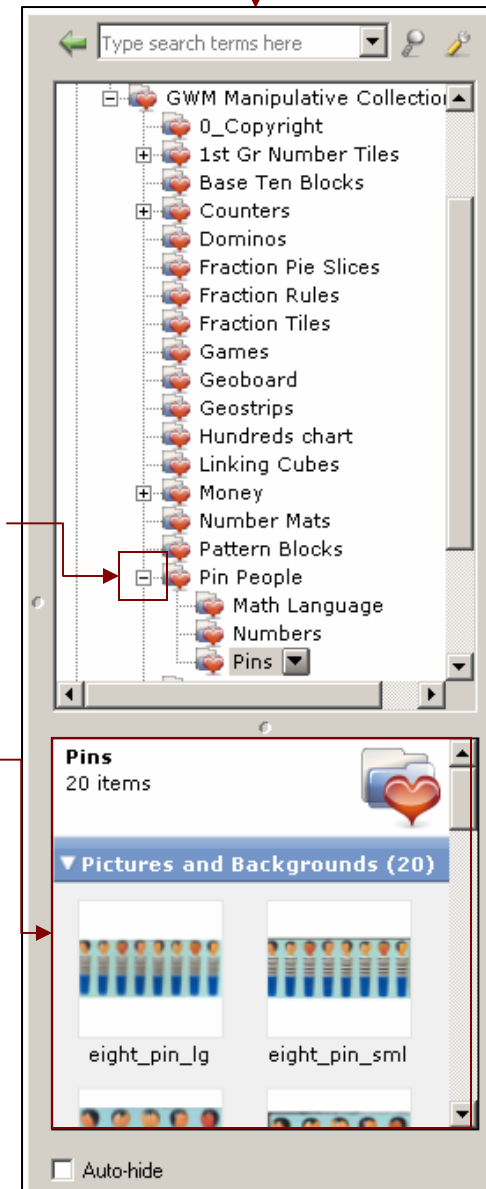
All the custom galleries, including Graphic Organizers and GWM manipulatives, are under “My Content.”

You can expand either window by clicking and dragging on the bar in the middle

Clicking on the plus symbol next to an item, such as “My Content,” will display sub categories.

When a category is selected, the content of that category will appear in the window on the bottom. The more you can drill down using the plus symbols, the more specific the results will be.

! The Galleries are based on network logins. You will have to install the galleries on your login to use them. To do this, see “How to add a collection to the gallery.”



The SMARTnotebook 10 Toolbar

Add Page

This button is used all of the time! It allows you to insert a page easily.

Paste

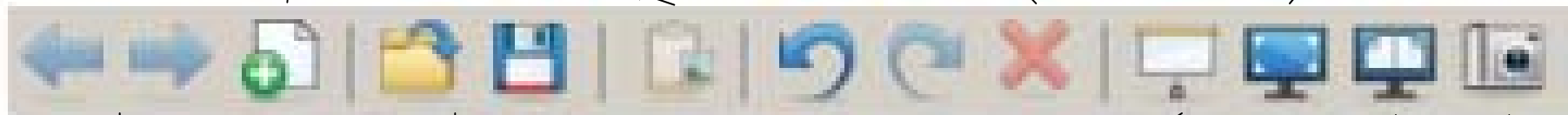
Paste things from other programs or from Notebook. There is no "Copy" because the Right Click button fills this need.

Delete

The "Delete" button is only active when something is selected in Notebook

Full Screen

Makes the toolbars disappear so the view area is maximized. A floating toolbar allows you to move from slide to slide or bring back toolbars.



Previous/Next Page

These buttons can be useful, but most people prefer to use the page sorter tab.

Open/Save

The open button will replace the current Notebook file with what you select to open.

Undo/Redo

You have unlimited Undos and Redos!

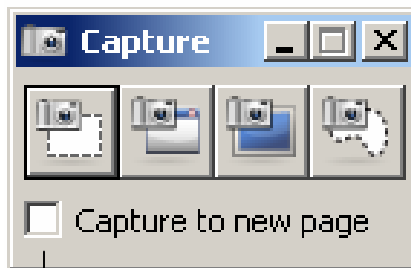
Window Shade

The window shade allows you to control what the class sees. The shade can be pulled from the top, bottom, or sides.

Dual Page

allows you to view two pages at the same time

Screen Capture



Allows you to click and drag a box to capture



Allows you to capture a window



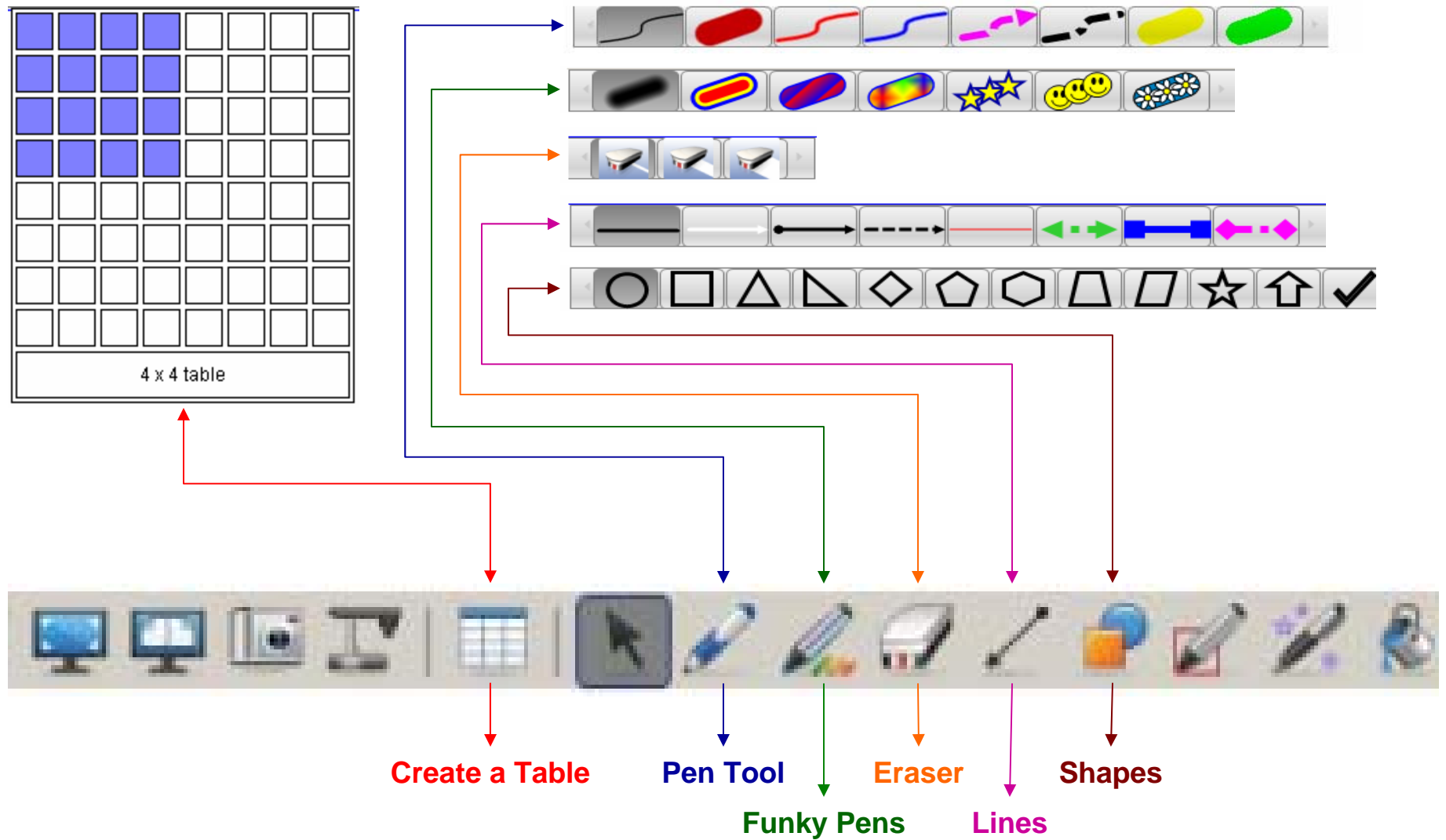
Allows you to capture the whole screen



Allows you to draw a freeform selection to capture

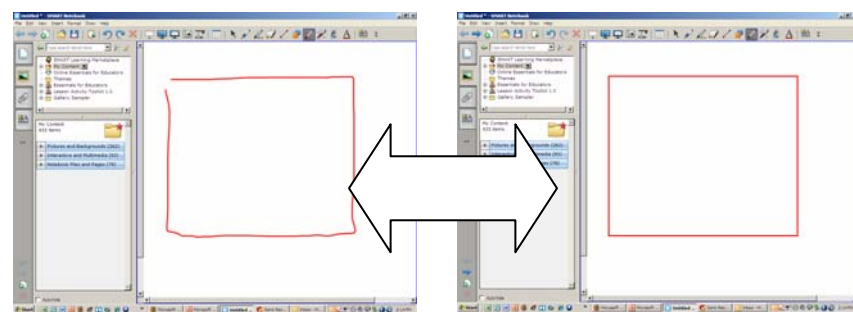
Check this box to add a new page in the page sorter when you capture an image.

SMARTnotebook 10 Toolbars



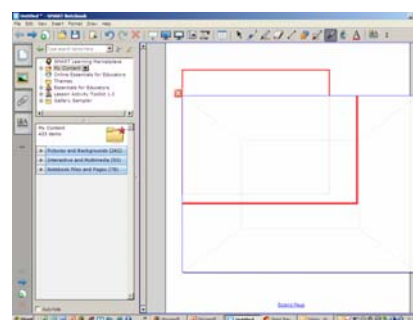
SMARTnotebook 10: Shape Pen and Magic Pen

The Shape Pen



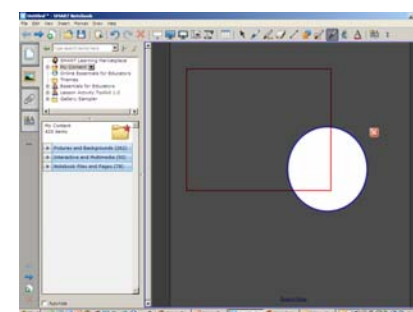
The shape pen will snap a hand drawn shape into a version with straight lines and perfect angles. This tool works best with squares, rectangles and equilateral triangles.

The Magic Pen



Magnifier

The magic pen magnifies when you draw a rectangle. Dragging on the blue line around the rectangle will move the area of magnification.



Spotlight

The magic pen creates a spotlight when you draw a circle. Dragging on the shaded area will move the spot light.

